

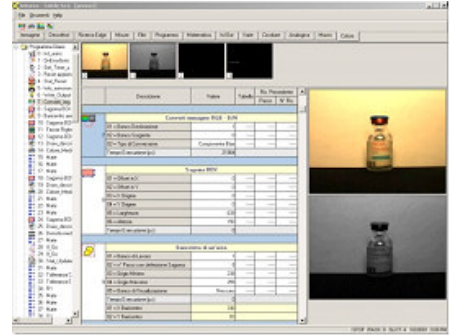


Accutech Artificial Vision Systems: machines that can see

Abstract

Accutech supplies vision systems that are used to automate a wide range of manufacturing processes where vision is required. Artificial vision systems are machines that can "see": they count, guide, inspect and identify products on production lines.

An Accutech vision system captures images of the part to be inspected through one or more video cameras. The system then analyzes the image(s) and generates an answer about it, such as whether a part is defective. This information can be sent to the control equipment on the manufacturing line that will remove a bad part from the process.



Artificial Vision have potential applications in many industries, such as packaging, pharmaceuticals, cosmetics, security and food industry.

Company products and service description

Manufactured items often are produced too quickly or with tolerances too small to be analyzed by the human eye. Accutech Artificial Vision Systems respond to the requirements of many manufacturing processes that have surpassed the limits of human eyesight.

A machine vision system is formed by:

- digital camera(s)
- image server
- software
- accessories: led light, switching strobo, I/O expander, viewer, HD net



Accutech offers a wide range of open products and systems dedicated to industrial imaging, that can be easily combined and programmed into efficient solutions. All the products are Ethernet-centric, which empowers customers to implement flexible architectures that can be expanded without theoretical limitation.

Antares, our advanced graphical programming tool, allows users to rapidly create imaging applications with high-level commands and customizable graphic interfaces.

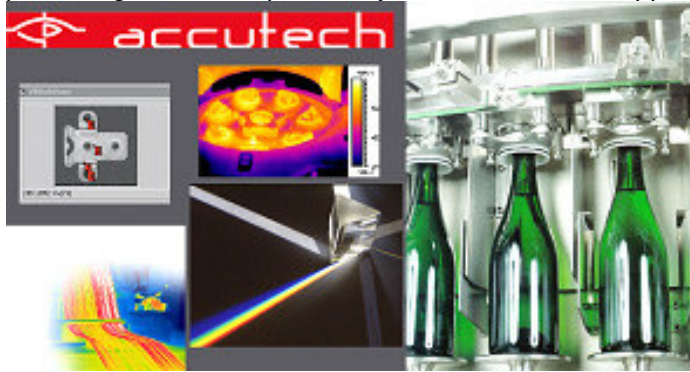
Market applications

The machine vision market can be segmented into two categories: original equipment manufacturers (OEMs) and end-users.

Currently, the majority of Accutech customers are OEMs, which are companies that build standard products sold as capital equipment for the factory floor.



The end-user marketplace is also a potentially large market for machine vision technology where Accutech operates producing custom inspection systems for different applications.



The most important industries where machine vision systems are required are:

- packaging
- pharmaceutical and cosmetics
- automotive
- food and beverage
- mechanical
- security

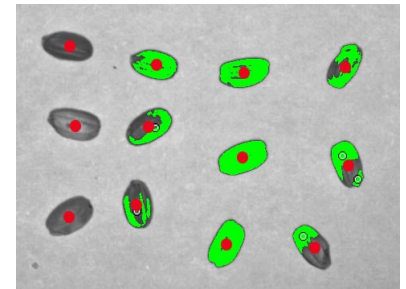
Innovative aspect

Accutech machine vision systems lead to zero-defects quality. In all industries, defects cost money, waste time and frustrate managers. In some cases (think pharmaceuticals or medical devices), production errors can cost lives.

The pursuit of zero defects is justified only if it means less costs. The investment in machine vision systems is overcome by savings due to their important work.

Our products replace human vision in a variety of industrial operations. Vision expertise is enhanced by optics, mechanical, automation and communication know-how.

Hardware and software modularity combined with cross-technological expertise are the basic building blocks for Accutech's custom solutions and ensure mass-product-like quality, reliability, unbeatable price/performance and exceptionally fast time-to-market.



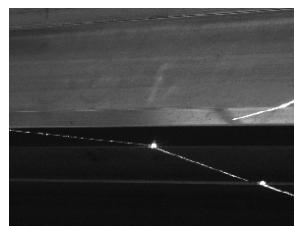
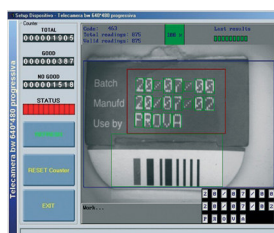
Main advantages

Accutech provides complete, automated inspection solutions for original equipment manufacturers (OEMs) and end-users in a variety of industries.

We count on Tattile hardware, the European leader in the Imaging market. Accutech produces comprehensive solutions that meet all the customers' functional and environmental requirements for long term uninterrupted operation – with auto-diagnostics and remote assistance.

The main advantages of industrial vision technology are:

- reducing product lots rejects
- reducing production costs
- reducing personnel costs
- enhancing company image



Contacts

Accutech srl
Via San Gervasio, 6
I 40121 Bologna
+39 051 9910 929
+39 051 7456 815
e-mail: info@accutech.it
web: www.accutech.it

accutech